

048453

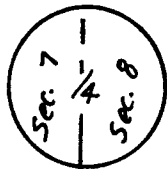
RECEIVED  
LARAMIE COUNTY  
CHEYENNE, WY.

CERTIFIED LAND CORNER RECORDATION '88 SEP 6 AM 10 27

DESCRIPTION OF CORNER EVIDENCE FOUND, AND ORIGINAL RECORD (If known)

T 13 N

R  
66  
W

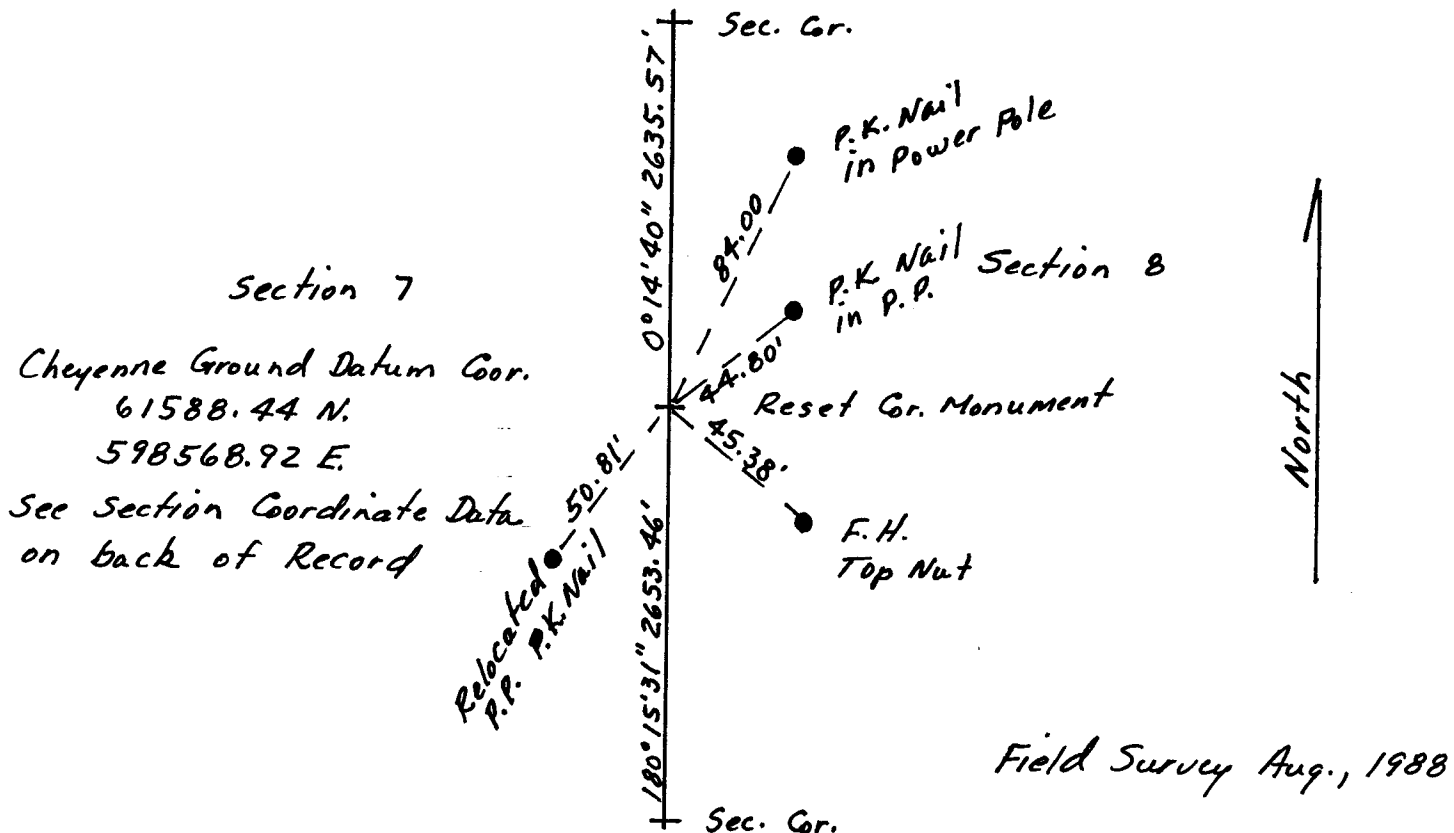


Found disturbed 5/8" Rebar with Surv Kap at location as reference below. References taken from recorded Filed by L.S. 2500.

DESCRIPTION OF MONUMENT AND ACCESSORIES ESTABLISHED TO PERPETUATE THE ORIGINAL LOCATION OF THIS CORNER:

Set 5/8" x 24" Rebar with Surv Kap along side of disturbed monument using references markers provided on existing Monument Record Filed by L.S. 2500.

SKETCH, WITH COURSE AND DISTANCE TO ADJACENT CORNER IF DETERMINED IN THIS SURVEY. (May Sketch or Paste Reproduction on Reverse Side.)



Field Survey Aug., 1988

I, Edward C. Fry certify that I have carefully performed ~~or reviewed~~ the work done on the diagrammed corner as reported on this recordation form and approve the same.

Edward C. Fry PE/LS 662  
Signature of Surveyor Registration No.

STATE OF WYOMING,  
Office of Clerk and Recorder,  
County of Laramie

This "corner record" was filed for record on the 6th day of September, 1988, was noted on the cross-index plat and is assigned page No. 1366, in book No. 1264.

Janet C. Whitehead  
County Official  
Cross Index No. \_\_\_\_\_ T. \_\_\_\_\_ R. \_\_\_\_\_ Mer.  
\_\_\_\_\_ T. \_\_\_\_\_ R. \_\_\_\_\_ Mer.  
\_\_\_\_\_ T. \_\_\_\_\_ R. \_\_\_\_\_ Mer.  
\_\_\_\_\_ T. \_\_\_\_\_ R. \_\_\_\_\_ Mer.  
\_\_\_\_\_ T. \_\_\_\_\_ R. \_\_\_\_\_ Mer.  
\_\_\_\_\_ T. \_\_\_\_\_ R. \_\_\_\_\_ Mer.

BOOK 1264

G-5 13-66

1366

64223.99 N.  
598580.15 E.

64209.14 N.  
601266.02 E.

64176.29 N.  
603928.59 E.

61588.44 N.  
598568.92 E.

8

61531.38 N.  
603930.70 E.

58935.01 N.  
598556.94 E.

58923.82 N.  
601234.27 E.

58910.18 N.  
603933.97 E.

City of Cheyenne - Ground Datum Coordinates  
Section 8, T 13 N, R 66 W.